





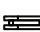
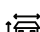
INSTALLER FRIENDLY
SLIPCLIP

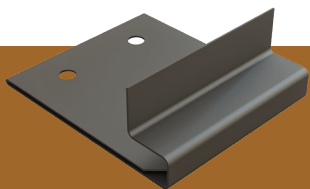


About SlipClip

Use for horizontal and vertical installations. Allows unrestricted expansion and contraction of panels with temperature change. Choice of fastener head type. Offers choice of fastener head type and adjustable spacing (18" recommended). Clips stay in place and minimizes shimming process. The panel is not fixed directly to the wall, allowing it to move freely with the conditions of the application. Fits ShadowClad Prime Wall Cladding Panels offered by Lenmak.

Product Features

-  Galvalume substrate
-  Prepunched holes
-  Accommodates temperature changes
-  Conveniently packaged
-  Preload panel
-  Installs vertically and horizontally



Less friction, relaxed panels, free movement.