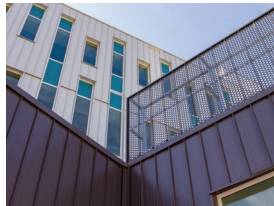







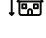
# SPORTCHEK

Made-to-order and produced on-demand to meet your needs.

## ARCHITECTURAL PANELS STRATACLAD

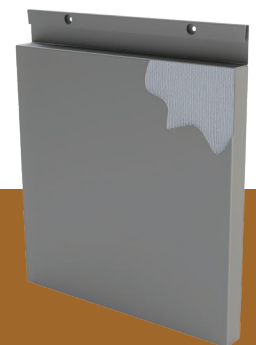


### Product Features

-  *Concealed fastening*
-  *Foam fill for rigidity*
-  *Sized-to-suit*
-  *Pre-finished steel*
-  *Light gauge*
-  *Soffit/wall applications*

### Made-to-Order

The StrataClad product line is comprised of three unique systems with the following performance characteristics. .050" (1.27mm) aluminum or 22ga (.033"/.84mm) steel with 70% Kynar finish in a wide range of pre-finished colours. Laminate-free materials pose no risk of peeling, bubbling, or delaminating over time.



Customizable panels with a focus on sustainability and style.