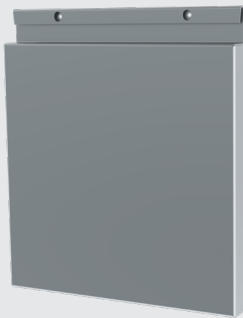


# CUSTOM METAL FABRICATION

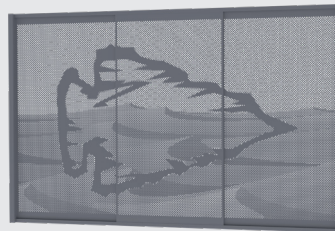
Custom flashing, metal roofing, wall cladding systems, architectural panels, bending, rollforming, shearing, sheeting, and more.

## Architectural Panels



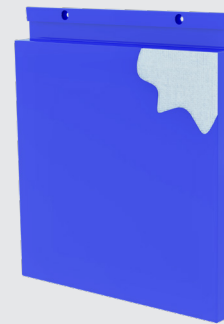
**Aluminaire**

- 2mm aluminum
- Pre-finished or post-finished by powder coating
- Soffit/wall applications, sized to suit
- Concealed fastening
- Noncombustible construction



**Silhouette**

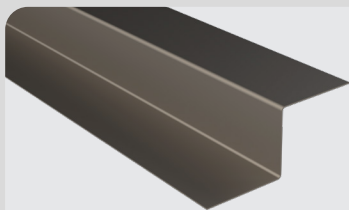
- Aluminum, stainless steel, and other materials
- Perforations create patterns or full scenes
- Profiles are customizable to suit application



**StrataClad\***

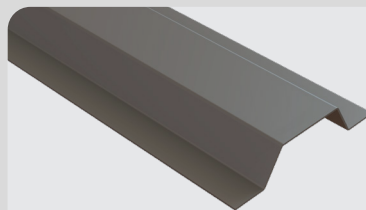
- Light gauge steel with foam fill for rigidity
- Wide range of prefinished colours and prints
- Soffit/wall applications, sized to suit
- Concealed fastening

## Substructure Components\*



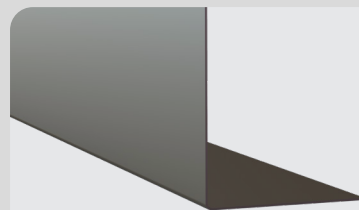
**Z-Bar**

- Galvanized steel and aluminum
- Available in 14 gauge to 22 gauge
- Dimensions are customizable to suit application



**Hat Bar**

- Galvanized steel and aluminum
- Available in 14 gauge to 22 gauge
- Dimensions are customizable to suit application



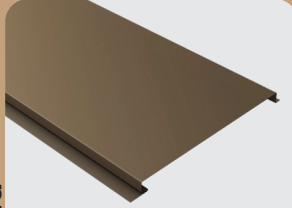
**L-Angle**

- Galvanized steel and aluminum
- Available in 14 gauge to 22 gauge
- Dimensions are customizable to suit application

# Cladding

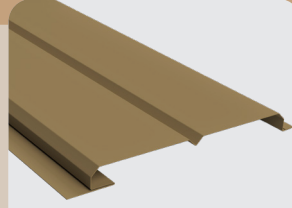
- Light gauge prefinished steel  
 - Soffit/wall applications, vertical or horizontal  
 - Concealed fastening

## ShadowClad



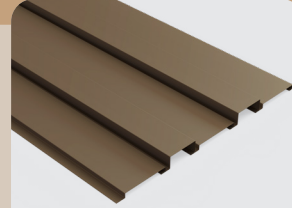
### Prime

- 6", 8", or 12" Coverage, 1" Depth, Reveal up to 1", Length up to 20'
- Options include Venting, and V ribs



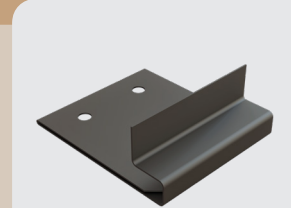
### Tongue and Groove

- 8" or 10" Coverage, 1" Depth, Length up to 20'
- Each panel comprises 2 planks with chamfer edges



### Custom

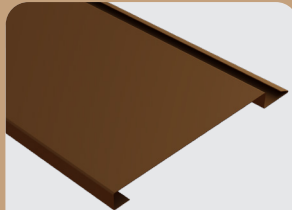
- Custom Coverages and Depths available, Length up to 20'
- Contact Lenmak Sales Team for size options and limitations



### Slip Clip

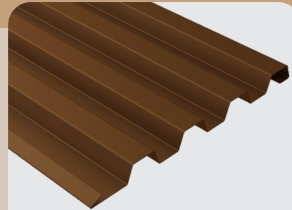
- Specific to ShadowClad
- Soffit/wall, vertical/horizontal
- Allows panels to move with temperature

## OmniClad



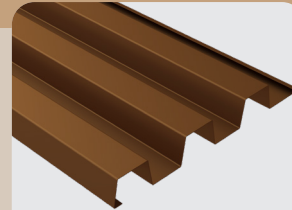
### OmniClad

- 10.375, 8.375, and 6" Coverage, 0.75" Depth, Length up to 26'
- Available splice or reveal plates for end joints



### OmniClad SlimRib

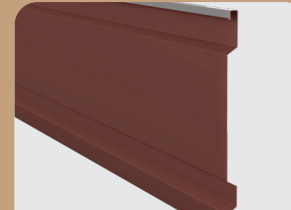
- 10" Coverage, 0.75" Depth, Length up to 26'



### OmniClad Ribbed

- 12" Coverage, 1.50" Depth, Length up to 26' long
- 4 unique profiles the compliment each other

## InterClad



### Prime

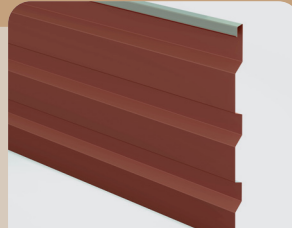
- 16.875" Coverage, 1" Depth, Length up to 20'
- Options of venting, and ribs
- Clips available

## InterClad



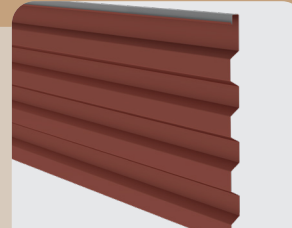
### Duo XL

- 17.75" Coverage, 1" Depth, Length up to 20'
- Clips available



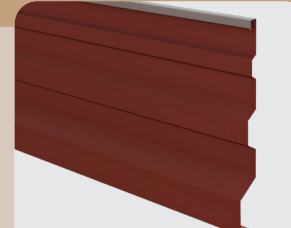
### Trio

- 16.5" Coverage, 1" Depth, Length up to 20'
- Clips available



### Quattro

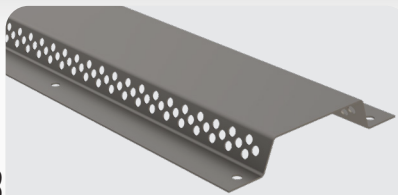
- 16.125" Coverage, 1" Depth, Length up to 20'
- Clips available



### Custom

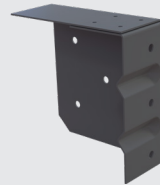
- Achieve a custom look for your project
- Clips available

## Accessories



### Vented Slotted Hat Channel

- Galvanized steel and aluminum
- Available in 14 gauge to 22 gauge
- Dimensions are customizable to suit app.
- Venting and slotted sizing and spacing are customizable



### Thermal Max Clip

- Compatible with a variety of wall build-up conditions and cladding types
- The thermal isolator tape helps to reduce thermal bridging through the wall assembly and prevent air leakage



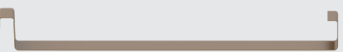
### Soffit

- Light gauge prefinished steel and aluminum
- Concealed fastening
- 12" coverage
- Several rib options available

## Roofing

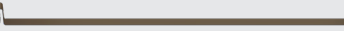
- Light gauge prefinished steel
- Wide range of colours and prints
- Concealed fastening

Styles of panels




**Mechanical Lock**

- 1", 1.5", or 2" seam, 2 widths per, 3 rib patterns
- Concealed fastening with clips (req. seamer)
- Full roof decks or open purlins; low-slope (some seam sizes)



**Snap Lock**


- 1" or 1.5" seam, 2 widths per, 3 rib patterns
- Concealed fastening with clips, pressure interlock
- Full decking only, ideal for long runs



**Nail Strip**

- 1" or 1.5" seam, 2 widths per, 3 rib patterns
- Concealed fastening integrated into panels, pressure interlock
- Full decking only, shorter runs/slope over 3/12

Options



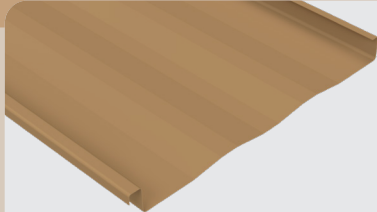
**Flat**

- Flat face available in 22 gauge and select sizes of 24 gauge



**Pencil Rib**

- Two parallel ribs add character
- Available in 26 gauge, 24 gauge and 22 gauge



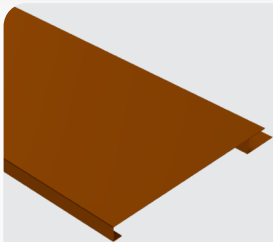
**Striation**

- Stiffen belly of the panel
- Available in 26 gauge, 24 gauge, and 22 gauge

## Trim

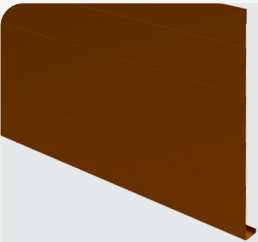
- Light gauge prefinished steel and aluminum
- Standard length 10' with custom lengths available

Window Battens




- Multiple depths and face sizes

Fascia




- Multiple depths and face sizes  
- Multiple rib options

J Channel




- Custom pockets and face sizes

Drip Cap



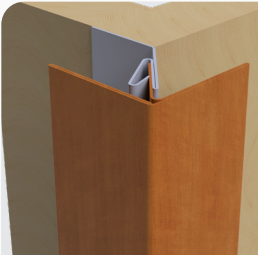
- Colour wrapped profiles

2-piece Transition




- Install Transition cap after panel  
- Base in depths of 0.75" to 2"  
- Quickest Panel Joint/Transition option to install

2-piece Outside Corner




- Install finishing cap after panel  
- Base in depths from 0.75" to 2"  
- Corner cap min. face size is 2"

2-piece J Channel



- Install finishing cap after panel  
- Base in depths from 0.75" to 2"  
- Custom size of face of cap

2-piece Inside Corner



- Install finishing cap after panel  
- Base in depths from 0.75" to 2"  
- Corner cap min. face size is 2"

\*Product contains a combustible element. Consult building code and design requirements prior to purchase or use.



**Available colours and accessories**  
For colour availability, please refer to Lenmak.com. Lenmak stocks coloured screws and accessories to complement our product offering.



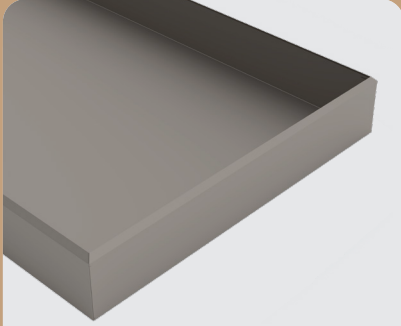
**Custom service**  
Custom service includes cut-to-length panels, panel corner notching, and panel venting. Our Computer Numerally Controlled bending cell can handle pieces of metal up to 26 feet long.



# Curtain Wall

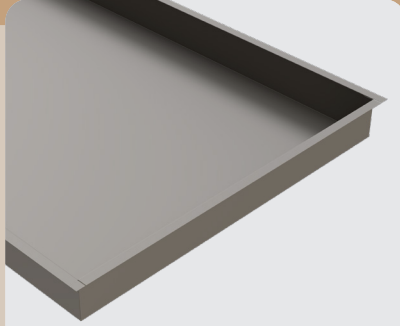
- Galvanized steel or anodized aluminum with bonded foam insulation (R4.3/in)
- Air and vapour tight, ready for installation

## Envatherm\*



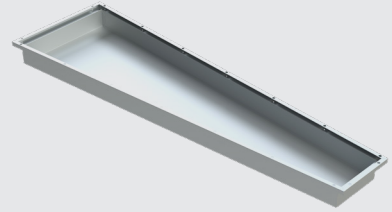
### Inner Flange

- 45° angled gum-lip at perimeter, no fastening flange



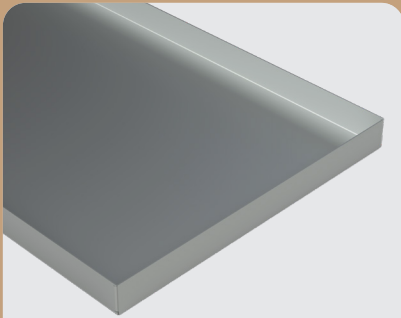
### Square Flange

- Fastening flange at perimeter with available pre-punched holes



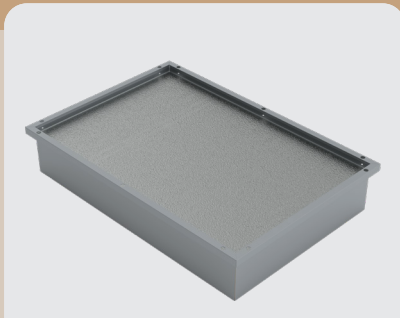
### Tapered / Mitred Panel

- Empty panels without foam insulation
- Inner, Square, Box, and No flange configurations available



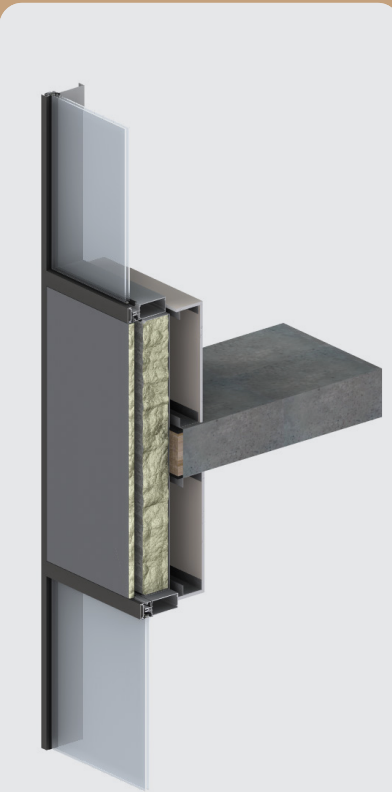
### No Flange

- No fastening flange

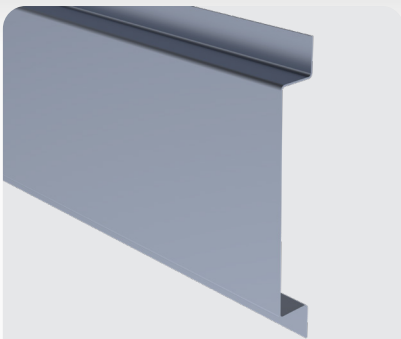


### Box Style

- Fastening flange with customizable integrated glazing adaptor at perimeter

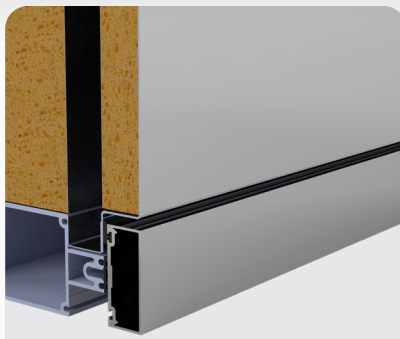


## Accessories



### Anodized Flashing

- Custom flashing made to match anodized backpans



### Spandrel Therm

- Aluminum spandrel panel with bonded foam insulation (R4.3 per inch)
- Air- and Vapour-tight, installation-ready
- Fastening flange at perimeter with available pre-punched holes

## Assembly

- Light gauge steel with foam fill for rigidity
- Wide range of prefinished colours and prints
- Soffit/wall applications, sized to suit
- Concealed fastening

\*Product contains a combustible element. Consult building code and design requirements prior to purchase or use.

### OFFICE

10404 – 176 Street NW, Edmonton,  
Alberta, Canada  
T5S 1L3

### CONTACT

Phone : (780) 451-5482  
E-mail : orderdesk@lenmak.com  
Website : www.lenmak.com

